



Sir John Murray

Specification

General

Built 2004

LOA 23.7 Mtrs

Beam 8.0 Mtrs

Draft 3.8 Mtrs

Main Propulsion:

Twin Cummins NT14 Engines Rated at 400 HP, Total 800BHP

Driving fixed pitch Propellers through Twin Disc Gear boxes

Trolling Mode for towing Seabed Camera's at slow speed

Aux 1: Cummins NT14 Generator Rated at 270KW

Aux 2: Cummins B series Generator Rated at 150KW

Aux 3: Northern Lights Harbour set Rated at 27KW



Steering:

Rudders are run by Electric Motor onto Hydraulic Pump set, these have 3 Joystick control stations on the bridge plus ships wheel

- Bow Thruster has 3 Joystick control stations on the bridge
- Stern Thruster has 3 Joystick control stations on the bridge

Tanks:

Fuel capacity 40000 ltrs

Domestic Water 30000 ltrs

Lab Water Supply 4000ltrs

Power supplies available:

415V, 240V, 24V and 12V

Deck Machinery

- Pentagon Hydraulic System with Wire Length Counters
- 2 x 5 ton Rapp Trawl winches capacity 600 mtrs warp
- X 2.5 ton Rapp Hydrographic winch 500 mtrs wire capacity
- 1 x 5 ton Rapp Net drum
- 1 2.5 ton Hydraulic Gantry with 2 ton Rapp Gilson winch
- 1 x 2.5 ton Rapp Hydraulic Capstan
- 1 x 5 ton Rapp Anchor winch
- 1 Palfinger PK18500 Deck Crane 13 mtrs reach fitted with 2 ton winch, Remote Control

ADCP Moonpool:

With Electric Winch to raise or lower Transducers or other Hydro Acoustics





Accommodation:

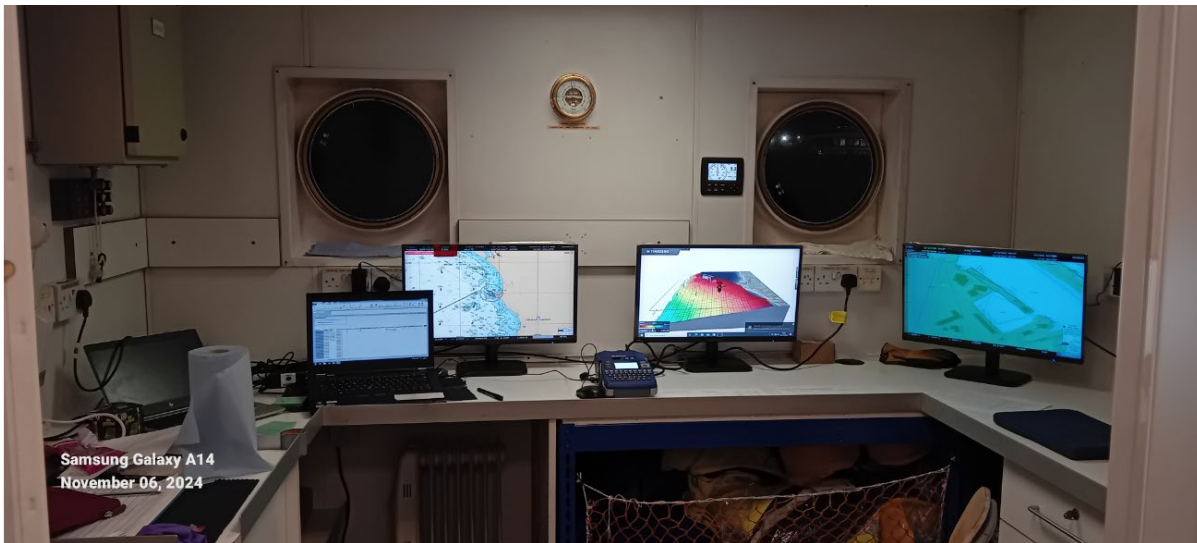
- 2 x Cabins on Main Deck,
- Captain's Cabin is at the bottom of the Bridge Stairway
- The Engineer's Cabin with Engine Alarm Panel and Bilge Alarm Panel next door.
- 2 x Single Cabins on Lower Deck, Cook Cabin, Mates Cabin.
- 4 x Double Cabins on Lower Deck for Crew / Scientists.
- TV Points in all cabins
- Shared Mess Area
- 3 Toilet/ Shower rooms
- 1 Work Area Toilet outside of Living Accommodation



DRY Lab:

- 3 Monitor Screens Repeating from Bridge Sodena's and also with Wassp Multibeam System

- 16 Double Sockets
- Ethernet Data Sharing Cabinet
- GPS NMEA Data Output
- Heading NMEA Data Output
- Furuno Wind Speed and Direction Anemometer
- Barometer
- First Aid Kit
- Co2 Fire Extinguisher



WET Lab:

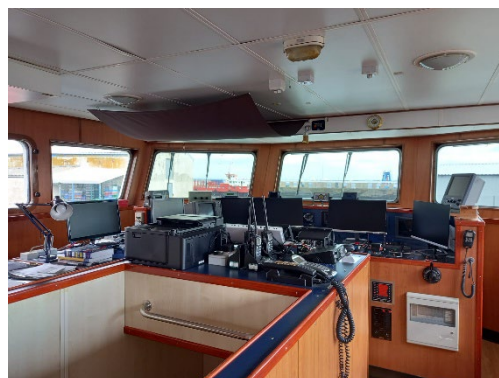
- Numerous Work stations around Wet lab fitted with stainless steel work surfaces for fish sampling and Formica surfaces for other work.
- 4 Sinks with hot and cold water from own water tank supply (not Domestic Supply)
- 2 Large Chest freezers
- 1 Tall Freezer
- 1 Regular size Freezer
- 1 Refrigerator
- 1 Bassaire Clean Air/Fume cupboard
- 1 TV for mirroring Bridge Sodena Chart Plotter
- 2 MasterFlex L/S Digital Modular Drives
- 9 Double 240v Sockets

- 3 Double Ethernet Sockets



➤ **Ship's Electronics:**

- 2 Sodena Mini ECDIS with Tidal Programme
- 1 Class A AIS
- 2 EPIRBs
- 1 AIS SART
- 1 WASSP Multibeam system with Time Zero
- 1 ADCP Current Profiler
- 1 Magnetic Compass
- 1 Furuno Satellite Compass
- 1 Furuno 48 miles Radar
- 1 Furuno 96 miles Radar
- 1 Satellite Phone
- 1 Mobile Phone
- 2 Furuno VHF
- 4 Hand Held VHF with built in AIS
- 2 Furuno Anemometers
- 1 Talk back system throughout ship
- 1 Satellite TV Dome
- 1 Multi camera CCTV recorder



General Info:

Small Boat Cradle on top deck and Stability Book confirmation for safe carrying/Deployment/Retrieval of 4m Avon Searider RIB or equivalent RIB with weight up to 1Ton

Vessel has been maintained to a high standard with all certification of Work Boat Code.

5 Yearly survey completed August 2025.